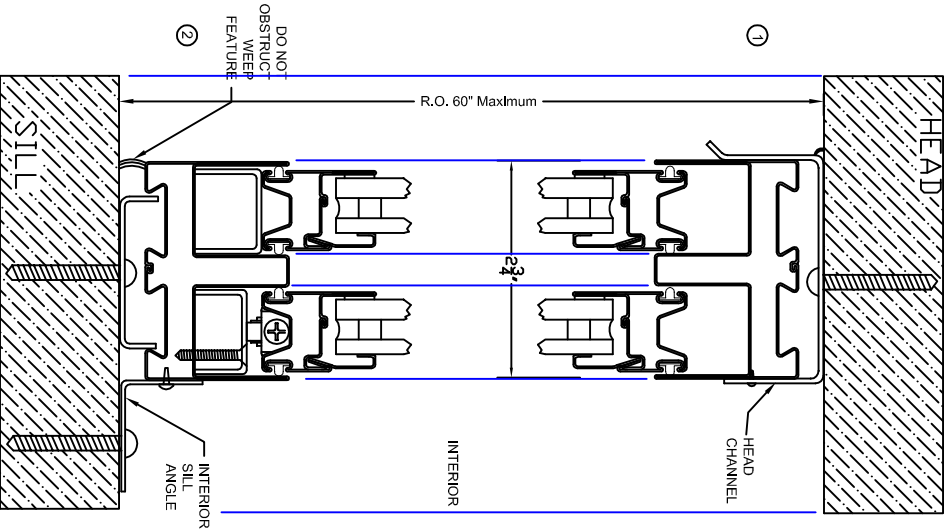
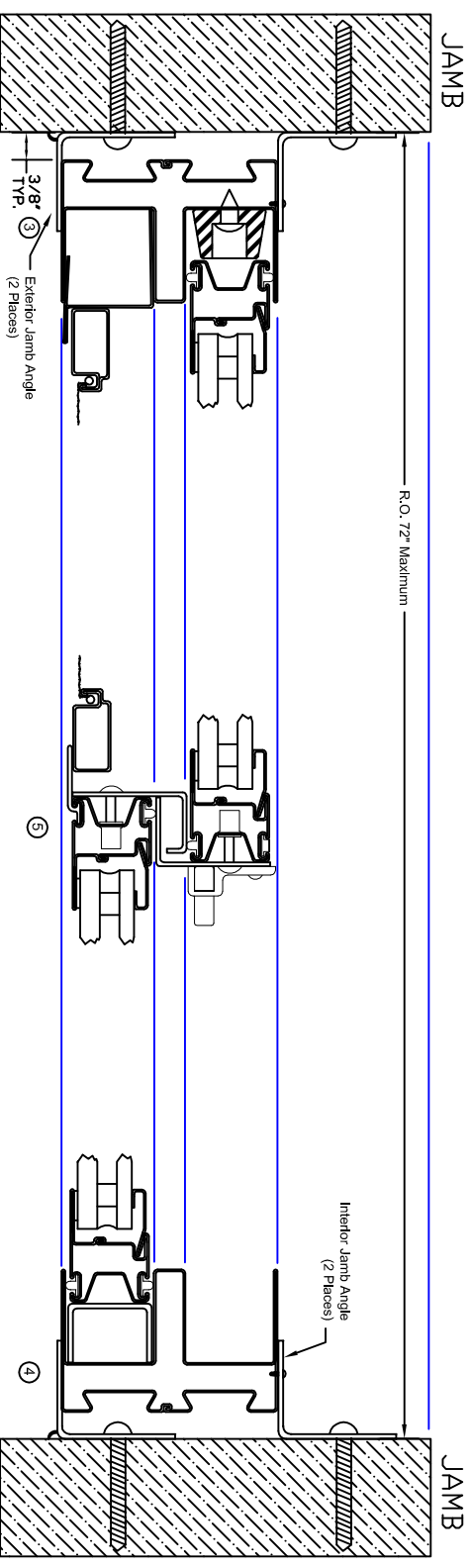


## Elevation (Exterior)



### FYRE-TEC SERIES 900P UL LABELED STEEL FIRE RATED WINDOW

Design load ratings for these windows to be as per chart shown lower left.

#### Fastener Schedule:

Anchors shall be spaced as indicated on details. Subframe: jamb, head, and sill fasteners to be corrosion resistant #10 x 1 1/2" wood or self tapping screws, spaced at 16" on center maximum, with a maximum of 3" from each end. 1/2" self tapping screw will attach trim components to window frame on interior side same spacing as previous.

Silicone caulking applied to all visible seams between wall and window framing connected by subframe install kit.

Windows glazed with 1 1/8" IGU (Minimum 3/8" ceramic fire-rated glass over 1/4" annealed)

#### General Notes:

1. This is a non-impact fire-rated window system in accordance with and meeting the requirements of the Florida Building Code (FBC).
2. Impact shutters are required with these units.
3. Buck, framing, and masonry by others and is the responsibility of the architect or engineer of record.
4. This installation procedure does not address the sealing consideration that may arise in different wall conditions. See the installation instructions packaged with the window.
5. The Slider windows have been tested and meet the performance requirements of Class LC-PG50-HS Size Tested 72" x 60" iaw AAMA/WDMA/CSA 101/1.S.2/A440-17 and have been Classified as such by Underwriters Laboratories (File R21803)

Drawing Layouts NOT TO SCALE

## Series 900P Horizontal Slider Window Installation

DWN BY  
ERIN EILERS  
Ckd by



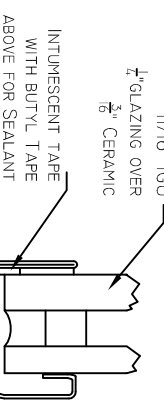
701 Centennial Road Wayne, Nebraska 68787  
Phone 1-800-377-3261 Fax 1-402-375-4261

Load Direction	Water Penetration (1)	Structural (2)	HVHZ IMPACT RATING
Positive	+50	+75	NONE
Negative	N/A	-75	NONE

Notes  
(1) Water Test Pressure = 7.50 psf equates to Design Pressure of +/- 50

(2) Structural Pressure = 112.5 psf equates to Design Pressure of +/- 75

Rough Opening Size: 72" x 60" (6) anchors per Head / Sill & (5) anchors per Jamb. max-16" O.C.



## Glazing Detail

#### TOLERANCE:

1. Fractions ±1/16
  2. Decimals ±.0625
  3. Angles ± 1/2 degree
- Except as Noted

MATL

DATE  
1/19/21  
NEXT ASSY  
NTS

PAGE  
1 OF 1  
DWG No. 900P